



ShelterBox USA

No one without shelter after disaster

**2023
ANNUAL
REPORT**

TABLE OF CONTENTS

BOARD OF DIRECTORS

Steve Horan *Chair*
Matt Gerber *Vice Chair*
Noaman Sharief *Treasurer*
Katherine Fick *Chair Emeritus*
Jan Reed *Secretary*
Jana Elkadri
Jeffry Cadorette
John Glanville
Dr. Samer Jaber
Sharon Oluga
Holly Rickett
Peter Scott
Emanus Simeon
Marlise Skinner
Steven Tonkinson
Mahesh Turaga
James Sinclair Taylor

*Cover photo:
Tent distributions in
Morocco following
a 6.8 magnitude
earthquake in 2023.*



*ShelterBox and CARE lead practical
training session of shelter construction
committees in Ancuabe district,
Cabo Delgado, Mozambique, where
transitional shelters are being built.*

We Are ShelterBox

2023 Board of Directors | inside cover
Our Mission, Our Vision | 2
Letter from the President | 3
Why We Exist | 4
What We Believe | 5
Who We Are | 6
Our Values | 7
Our Five-Year Strategy | 8
Building Capacity within Communities | 10
The Church of Jesus Christ of Latter-day Saints,
Empowering Self-Recovery | 12
The Power of Partnering with Rotary | 14
Our Shelter Solutions | 16
Essential Household Aid Items | 18
A Flexible Approach to Providing Aid | 19
The Climate Crisis | 20
How We Prioritize Sustainability | 21

Our 2023 Global Response

2023 Responses by the Numbers | 22
2023 Deployment Map | 23
Turkey/Syria Earthquakes | 24
Syria | 26
Turkey | 27
Ukraine | 28
Morocco | 30
Cameroon | 32
Locally-led Responses: Burkina Faso, Ethiopia,
Libya, Mozambique, Somalia | 34

Our 2023 Financials

Statements of Financial Position | 36
Statement of Financial Activity | 37
Giving by Constituent Type | 38
Allocation of Expenses (%) | 39
Financial Transparency | 40

Our Supporters

2023 ShelterBox Media Highlights | 41
Volunteers Power ShelterBox | 42
Ambassador Fundraisers | 44
Ambassador Hall of Fame | 46
In Memoriam | 47
Give a Home | 48
Stock the Box | 48
Legacy Society | 48
Foundational Giving | 49
Corporate Giving | 49
The Shelter Circle | 50
ShelterBox Builders | 51
Rotary Club Giving | 52
Volunteer with Us | 53

OUR MISSION

To build awareness of global displacement and provide families with life-saving shelter and essential tools and supplies that will enable them to rebuild their homes and transform their lives after disaster.

OUR VISION

A world where no person is without shelter after a disaster.

SHELTER

is the foundation for life.

*Cameroon
distributions, 2023*

In 2023, ShelterBox marked 23 years of our mission to deliver emergency shelter and essential supplies to those displaced by disaster and conflict situations.

What began as an effort to help assist a few dozen displaced families each year has grown dramatically. Last year alone, we supported 325,000 people. As global displacement surged past 115 million, our impact expanded significantly—all because of you!

My work at ShelterBox provides many opportunities to witness firsthand the incredible resilience of our beneficiaries, who are often confronting unimaginable losses. During the winter of 2023, I met with many families in **Kyiv, Ukraine**, who had fled their homes and their livelihoods, leaving the war-torn, Russia-occupied areas in eastern Ukraine. They fled with nothing more than the clothes on their backs, and it was not uncommon to encounter dozens of displaced people sheltering in basements with no heat, hot water, or electricity. Every person I met longed for peace and the comforts of home. Because of our supporters, ShelterBox was able to help over 130,000 people displaced by the war with customized aid packages to support their diverse and changing needs. We provided everything from wood stoves, high thermal blankets and coats in winter, mattresses, solar lights, shelter repair kits, hygiene items, and more.

I also had the privilege of working alongside our response team deployed to the earthquake in the

Atlas Mountains in **Morocco**. There, I encountered Fadma, a grandmother who tragically lost her husband in their home during the quake. Fadma's home was reduced to rubble and, several weeks later, she was still sheltering outdoors with winter approaching and little protection from the elements. ShelterBox, in coordination with our local Rotary partners in Morocco, worked to provide emergency relief tents, thermal blankets, cook sets, and solar lanterns to Fadma and thousands of others displaced in rural villages. These were a lifeline for survival and a foundation for rebuilding their lives amidst the unforgiving conditions of the Atlas Mountains. Fadma's story is a poignant reminder of why our work is so critical: no one should be without shelter after a disaster.

In 2023, ShelterBox underwent significant growth and transformation. Thanks to your support, we have adapted and innovated, offering not only emergency shelter, but also more effective, locally sourced solutions tailored to each community's needs.

Guided by our new strategy—**'Do more. Do it well. Do it together'**—we provided durable shelters for families displaced for years in **Yemen**. In **Cameroon, Somalia, and Ukraine**, we enhanced our partnerships with local organizations to deliver aid more effectively and sustainably. The urgency

of our mission has never been greater. As climate change accelerates the frequency and severity of disasters, our commitment to adapting and evolving is crucial. We rely on the support of our community to stay agile and responsive.

I express my deepest gratitude for your continued support. More people than ever need the stability and comforts of home. Because of you, ShelterBox is able to reach people in their moment of need, providing them with the building blocks of recovery.

Together, we are not just providing shelter, we are restoring hope and dignity. Thank you for standing with us and helping us turn challenges into opportunities for those in need.

With deepest gratitude,

Kerri Murray

Kerri Murray
President, ShelterBox USA



WHY WE EXIST

117.3 MILLION

GLOBAL FORCED DISPLACEMENT

47 MILLION

FORCIBLY DISPLACED CHILDREN (40%)

68.3 MILLION

INTERNALLY DISPLACED PERSONS

43.4 MILLION

REFUGEES

ShelterBox is working to change this because everyone deserves a place to call home.



ShelterBox

ANNUAL REPORT 2023 | 4

Source: 2023 United Nations Refugee Agency (UNHCR)

WHAT WE BELIEVE

Shelter is a human right.

Shelter is the foundation for life, for survival, stability, and dignity.

Shelter is the first step towards recovery after disaster, offering a place to feel safe, stay together, stay healthy, earn a living, and help children get an education.

Shelter helps communities rebuild.

This image, taken during the first signs of snow in Ukraine, reveals the harsh conditions faced by families living in bombed-out apartment buildings. Many are left without heating or power, urgently in need of protection from the cold.



ShelterBox

ANNUAL REPORT 2023 | 5

WHO WE ARE

ShelterBox is a global community. Founded over 23 years ago with our iconic green ShelterBoxes. Today, we do much more.

We listen.

We hear what people need and create tailored support to meet complex situations.

We support.

We give emergency shelter and aid essentials, including Shelter repair kits, water filters and solar lights. We help people build, repair, and return home.

We share.

We use our expertise to support people worldwide and champion local partnerships and environmental sustainability.

We must act now.

Disaster, conflict, and climate change are forcing more people to flee their homes than ever before.

The crisis in Cameroon has grown more complex, with many displaced by conflict living with trauma and loss. Families forced to flee violent Boko Haram attacks are rebuilding their lives at Minawao Refugee Camp, where they receive support from ShelterBox.

OUR VALUES

Integrity

We commit to the highest ethical standards and strive to be honest, straightforward, and fair. We hold ourselves accountable for doing the very best we can for those affected by disaster, and for each other.

Flexibility

We adapt and overcome challenges to achieve shared goals. We approach our work with an open mind and the willingness to find the right solution.

Participation

We put people and their needs at the heart of what we do. We work together with people affected by disaster, our volunteers, partners, and supporters. We support each other. We are inclusive.

Learning

We champion continuous growth and development. We are driven to keep improving and exploring what we can do differently. We ask ourselves how we can be better for the people we serve, our volunteers and supporters, and each other.

People

People are at the heart of ShelterBox. ShelterBox is committed to improving equality, diversity and inclusion in our work and workplace. We recognize that we have a responsibility to make the best decisions for the communities we support by listening to the people we serve. We also have a responsibility to put our values into practice for our staff, volunteers, and partners. We will only be able to offer the best possible support for families after disaster if we continue to improve ourselves.

Humanitarian Principles

Everything we do is shaped by the four humanitarian principles of International Humanitarian Law: humanity, impartiality, independence, and neutrality.

Partnering with **Public Concern**, ShelterBox has supported thousands of households in Far North Cameroon, providing emergency and durable mud brick shelters.

OUR FIVE-YEAR STRATEGY	2022	2023	2024	2025	2026
------------------------	------	------	------	------	------

2023 was the second year of our current strategy period. Three strategic objectives now shape everything we do, and you’ll see on the following pages how these guided our work throughout 2023.

Do more.	Do it well.	Do it together.
Scale up to meet humanitarian need	Innovate to improve quality of shelter assistance	Address power imbalances in the global shelter system
Grow programmatic capacity through partnership	Grow our expertise in emergency shelter delivery through innovation and knowledge creation	Support local and national shelter responders to strengthen their capacity through skills and knowledge sharing
Achieve sustainable, flexible funding growth	Minimize our environmental impact	Build a diverse, global ShelterBox, representative of the populations we work with
Expand emergency response capacity through emergency preparedness	Measure what we do and learn for the future	Listen to and amplify the voices of affected communities



OUR NEW INTERNATIONAL PROGRAM STRATEGY

In 2023, we launched a new international program strategy defining how we can expand the scope of our responses and provide emergency shelter in more ways. The guiding principles behind the international program’s strategy are:

self-recovery	protection & inclusion	timeliness
locally-led responses	accountability	environmental sustainability

Ethiopia faces conflict and climate challenges, with over 30 million in need and 4.6 million displaced. In partnership with the International Organization for Migration (IOM), ShelterBox supported 12,000 vulnerable families with essential supplies in the Tigray region.

BUILDING CAPACITY WITHIN COMMUNITIES

Community Training

In 2023, extreme drought displaced millions in Somalia. Partnering with the Juba Foundation we delivered shelter materials for 3,500 people. Our collaboration focused heavily on technical training, enabling families to construct safe shelters.

We worked with landowners and the local government to secure stability for displaced families. By October 2023, we supported 10,000 people with durable homes and toolkits. Throughout, our partnership with Juba Foundation emphasized technical guidance and community training, ensuring sustainable and effective aid.

Community Tool Kits

Designed to be shared across an average of 12 households, these kits may include a range of reusable construction tools such as wheelbarrows, hammers, saws, shovels, and brick molds. They are made available to people who have received other shelter materials to support the construction or repairs of their shelter but are also often used by people in the community who have not received any other items.

Mozambique training sessions on building transitional shelters utilizing community tool kits, conducted in partnership with CARE, 2023.



THE CHURCH OF JESUS CHRIST OF LATTER-DAY SAINTS



In 2023, the transformative support of The Church of Jesus Christ of Latter-day Saints profoundly enhanced our global impact.

Their vital contributions enabled us to reach families in crisis across Syria, Morocco, Libya, Yemen, Ethiopia, Burkina Faso, Chad, and Ukraine, significantly extending our reach and amplifying our efforts.

Since our partnership began in 2017, we have worked hand-in-hand to meet both immediate and long-term needs of displaced families. Together, we have delivered critical resources—emergency shelters, water filters, winter clothing—empowering families to rebuild their lives and regain their independence.

Our mission centers on uplifting communities, with a dedicated focus on women and children, who face the toughest challenges in crises. Our collaboration has made a meaningful difference in over 20 countries, including Burkina Faso, Cameroon, Chad, Ethiopia, Honduras, Libya, Morocco, the Philippines, Syria, Yemen, and Vanuatu.

We are deeply grateful for the steadfast support of The Church of Jesus Christ of Latter-day Saints. As we move forward, we are eager to continue this essential partnership, committed to helping displaced families rebuild with renewed strength and hope.

EMPOWERING SELF-RECOVERY

Transforming Lives in Yemen: A Powerful Example of Impact

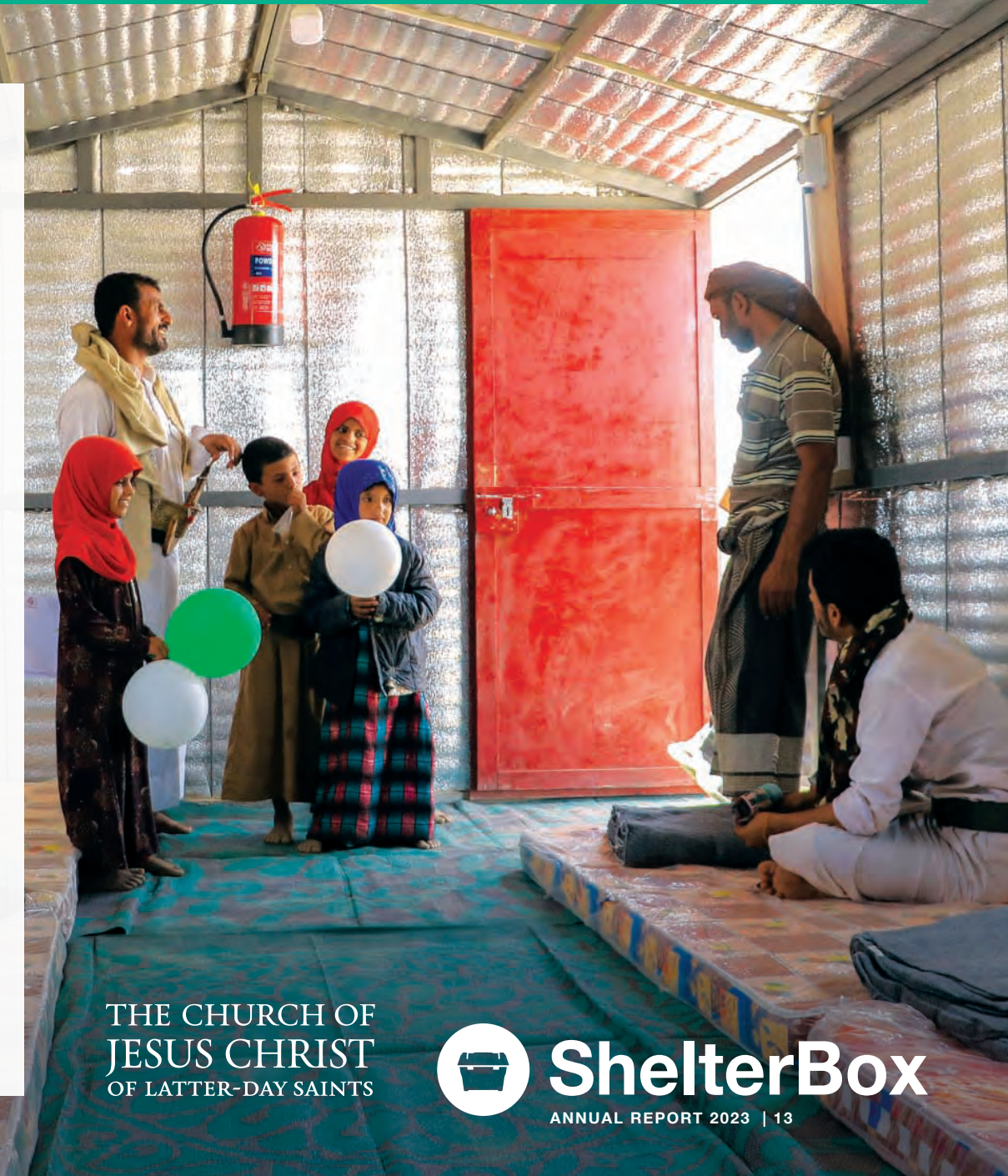
In one of the world's worst humanitarian crises, support from The Church of Jesus Christ of Latter-day Saints has made a transformational impact.

In Marib, Yemen, working with our partner **Benevolence Coalition for Humanitarian Relief (BCHR)**, we have provided durable shelters to hundreds of families displaced by civil war and severe flooding.

For over two years, countless families in Yemen endured harsh desert heat and relentless flooding while living in makeshift camps. Our new shelters, built from corrugated metal with fireproof insulation, and reinforced with concrete bases, now offer them better protection and comfort, representing a new beginning filled with hope and safety.

Thanks to The Church's support, over 900 households now have a secure, more permanent place to call home. This response would not have been possible without this critical support.

It not only demonstrates the significant impact of our partnership, but also highlights how essential support translates into real, life-changing solutions for families in crisis.



THE POWER OF PARTNERING WITH ROTARY

Rotary International has been essential to ShelterBox since our founding.

Rotarians help fundraise, spread awareness, and play a crucial role in our responses. In 2023, Rotary's involvement allowed us to work faster and more effectively. Our partnership, grounded in the belief that shelter is fundamental to life, is both practical and powerful.

In addition to globally raising awareness, Rotarians facilitate aid shipments and connect us with essential contacts. Their support is crucial in ensuring we provide timely aid and shelter. We deeply appreciate Rotary International's unwavering partnership, which strengthens our mission to offer emergency shelter and tools to disaster-stricken families.



Warehouse operations in Azures, Turkey—Rotary and the Rotary Club of Bolge hard at work unloading trucks and prepping ShelterBox aid for distribution.

In partnership with the Association Le Grand Atlas and Rotary, we delivered essential aid to 20 Moroccan villages.



ROTARY-SUPPORTED RESPONSES

Turkey-Syria Earthquakes

After February's earthquakes in Turkey and Syria, which left over 50,000 dead and six million displaced, Rotary worked closely with **AFAD** to enable ShelterBox's aid delivery in Turkey. With Rotary's connections, we quickly moved essential items to affected areas. Within 48 hours, ShelterBox teams and Rotary members delivered aid, assessing the best shelter options for different locations. We also shipped 500 tents from Panama, facilitated by Rotary, and provided training for their setup.

Morocco Earthquakes

In Morocco, following the September quake, Rotary members expedited aid delivery and helped our team establish crucial local connections. They coordinated packing and distributing aid, sourced special tent pegs, and focused our response on the most affected villages. Rotarians continued their support by providing food, clothing, and hygiene kits in the aftermath.

IN 2023, SHELTERBOX RECEIVED
\$1.65M
IN SUPPORT FROM ROTARY CLUBS

OUR SHELTER SOLUTIONS

Recovery begins with shelter.

Families who have lost their homes in a disaster or who have been forced to flee violence and war deserve sturdy and durable emergency shelter. We work hard to make sure that's exactly what we provide. Emergency shelter is at the core of what we do.

Depending on the disaster, weather, and location, the shelter needs of families differ. That's why we have developed a flexible approach. We listen and learn from the communities we work with to make sure we provide the right support.

STANDARD RELIEF TENT

For some disaster-hit communities, our durable family-sized tents, where they can come together as a family and feel safe and protected, are the best solution until they can start rebuilding their homes.



UNITED NATIONS (UN) TENT

These unmarked tents made to UN specifications are deployed in conflict and crisis settings where Western-branded aid can become a security issue. For some disaster-hit communities, our durable family-sized tents are where they can come together as a family and feel safe and protected.



TRANSITIONAL SHELTER

These shelters are built for long-term occupation anywhere from one to seven years. In situations where it may be unclear when displaced people will be able to return home, these are the best solution until they can start rebuilding their homes.



DURABLE SHELTER

This is a shelter solution suited to the needs of people likely to be displaced for more than a year. Designed to last upwards of five years, this custom solution might include community training and materials such as framing materials, timber, cement, sand and/or CGI (corrugated iron sheeting) for roofing or doors.



SHELTER KIT

In some communities, our Shelter Kits – containing tools, heavy duty tarpaulins, ropes, and fixings – are needed to create emergency shelter or to repair damaged homes making them livable again.



TENT LEVELING WITH CONCRETE BASE

Ground leveling for tents is normally constructed using cement blocks, gravel and casted cement to make emergency shelter more durable and increase protection from flooding and extreme weather conditions.

ESSENTIAL HOUSEHOLD AID ITEMS

A home is much more than a roof overhead.

That's why we also offer other disaster relief items that are essential for survival and can help to turn a shelter into a home.

Essential household items like tools, blankets, mosquito nets, cooking sets, solar lights, tarps, and water filters help to meet families' urgent needs, so parents can begin earning a living, children can return to school, and communities can rebuild.

Solar Lights



Water Filters



Water Carriers



Mosquito Nets



Cook Sets



Tarps



Tools



A FLEXIBLE APPROACH TO PROVIDING AID

Hygiene Kits

Often locally procured, these kits typically include basic personal hygiene items that displaced people have been forced to leave home without, such as toothpaste & toothbrushes, soap, washing powder, washing up liquid, shampoo, toilet rolls, and feminine hygiene items. The kit may also contain nappies for families with babies and young children.



Thermal Blankets & Ground Mats



Winterization Kits

These typically include mattresses, thermal blankets, and winter clothing such as coats, boots, gloves, and hats (for both adults and children), along with sleeping mats, and heaters or stoves with the necessary fuel.



Cash Assistance

We have learned that providing a small amount of cash to families, alongside essential shelter materials and training, can make all the difference.

Cash helps families buy what they need to rebuild.

A family might need specific materials to fix a home. If those materials aren't part of our Shelter Kits, it can be easier for people to buy what they need locally.

Cash helps kickstart local economies.

Providing cash means that suppliers and tradespeople can start doing business again. That's a vital step towards a whole community beginning to recover.

Cash helps people feel a sense of autonomy.

When your world has been thrown into confusion, feeling in control can be a powerful first step towards believing a normal life is possible.

THE CLIMATE CRISIS

Climate change is already a humanitarian crisis

Climate change is already a humanitarian crisis. We're seeing its impact around the world, as it makes extreme weather events like droughts, floods, tropical storms, and wildfires even worse, often in countries where many people live in extreme poverty.

That means vulnerable families who play the smallest part in contributing to the climate crisis are often the ones bearing the brunt of its effects. They are forced to leave their homes to survive – either because of these disasters, or to find food, water, or to make a living.

It is estimated that 1.2 billion people could be displaced by the climate crisis by 2050.

Philippines, Typhoon Rai, 2021

HOW WE PRIORITIZE SUSTAINABILITY

ShelterBox is acting towards reducing our carbon footprint in several ways, including:

- Reducing the use of plastics
- Recycling and reusing materials
- Utilizing local procurement
- Minimizing freight distances and air transport
- Prepositioning our aid around the globe.

In Mozambique, **CARE Mozambique** is leading sustainable disaster relief by repurposing aid packaging. A dedicated committee collects and redistributes plastic tarpaulin bags, baling straps, and leftover materials to vulnerable families. These are turned into shelter upgrades, latrine walls, carpets, baskets, and footballs. This initiative not only improves latrine safety for women and children but also highlights our commitment to recycling and sustainability. By prioritizing reuse, we support communities while minimizing environmental impact in our global relief efforts.



2023 RESPONSES BY THE NUMBERS

Thanks to you:

325,000 people in **14** countries
were supported across **22** projects.

65,000* families were able to rebuild
after earthquakes, flooding, conflict,
drought, and tropical cyclones.

Thanks to you, people had the support they needed most:
shelter, concrete tent bases, shelter construction materials
and training, stoves, cook sets, mosquito nets, thermal
clothing, cash support, and more.

* assuming 5 people per family

BURKINA FASO

CAMEROON

CHAD

ETHIOPIA

LIBYA

MALAWI

MOROCCO

MOZAMBIQUE

PAKISTAN

SOMALIA

SYRIA






TURKEY

UKRAINE

YEMEN

2023 DEPLOYMENTS MAP

KEY

-  conflict
-  drought
-  earthquake
-  flooding
-  tropical cyclone



TURKEY/SYRIA EARTHQUAKES



In Adiyaman, Turkey, the ShelterBox response team visited the impacted area and connected with Rotary and other organizations, 2023.

Earthquake damage in Syria, captured by our partner ReliefAid, 2023.

In 2023, a series of powerful earthquakes destroyed hundreds of thousands of buildings, displacing an estimated 3.3 million people in Turkey and 2.9 million in Syria.

Entire communities were left in ruins. Many were forced to sleep outdoors in freezing temperatures, as they could not return to their homes or had no homes to return to.

Despite logistical challenges, our expertise and collaboration with local authorities, partners, and Rotary ensured that aid reached those affected by the earthquakes in Turkey and Syria.

In Turkey, ShelterBox provided emergency tents and essential items such as blankets, mattresses, stoves, and lighting. Together we helped thousands of families endure the harsh conditions and begin the process of rebuilding their lives. Your support made this possible.

In northwest Syria, many buildings, already weakened by years of civil war, suffered the worst damage from the earthquakes. With three million people already displaced by the conflict, the earthquakes only exacerbated the crisis. Families faced harsh living conditions, freezing temperatures, and diseases like cholera. They endured the destruction of war, only to be struck again by the earthquakes and ongoing aftershocks.

TURKEY RESPONSE

In Turkey, with your support, ShelterBox provided emergency tents and essential items such as blankets, mattresses, stoves, and lighting to help thousands of families endure harsh conditions and begin rebuilding their lives.

We supported over:

12,500 PEOPLE	2,500 TENTS	6,000 MATTRESSES
8,000 BLANKETS	1,000 SOLAR LIGHTS	6,000 HYGIENE KITS
1,000 SOLID FUEL STOVES		

We are deeply grateful to the Church of Jesus Christ of Latter-day Saints for their generous support. They were the primary funders of the Syria earthquake response.

SYRIA RESPONSE

Following our response, the **Bahar Organization** gathered data from families living in displacement camps across Aleppo to understand the benefits of our aid, ensuring our efforts continue to meet the needs of those affected.

96% reported being able to meet the immediate needs of their household

87% reported an improvement to their living conditions, and feelings of increased safety and dignity

87% were satisfied with the performance of their tent one month after receiving it

88% of female households felt safer and more protected after receiving their tent

IMPACT HIGHLIGHT

SYRIA



More than 400,000 people in the region have received ShelterBox aid since we first responded to the crisis in December 2012. This makes it the largest, most sustained response in our history.

ENDURING CONFLICT AND DISASTER IN SYRIA

Imagine being forced from your home due to violent conflict, only to see what little you had left destroyed by an earthquake. This is the reality for 70-year-old Shamsa. Shamsa and her family fled their home in Syria because of the violent conflict. She recalls her life before displacement with deep regret. “We lived in houses with farmland; we had everything available to us. Then planes above us bombed us. We left our house because of the airstrikes. We left because we no longer felt safe.”

Life in the displacement camp has been hard for Shamsa and her family. When the earthquake struck, their situation turned into a nightmare. “When the earthquake occurred, mud piled up on us, and we stood on the ground with rain falling on us. We lost the aid we had; nothing remained.”

Before receiving aid from ShelterBox, Shamsa struggled to maintain her family shelter, often using a needle and thread to sew up what remained of their tent in preparation for winter.

ShelterBox partnered with the Bahar Organization to provide Shamsa with a sturdy tent and cash assistance. Shamsa used the cash to pay off debts and buy food. Despite her fears about the approaching Syrian winter, she was especially grateful for the cement floor of the tent, which was more durable than mud. Your support brings safety and relief to families like Shamsa’s, who face unimaginable hardships.

FINDING SAFETY AFTER THE TURKEY EARTHQUAKES

Aleu, 32, lives with her husband and their two young children, one-year-old Beste and four-year-old Boris, in the Azurs district of Turkey. When devastating earthquakes struck in February 2023, their home was severely damaged, forcing them to live and sleep outside in a small, cramped camping tent. “We couldn’t move in the tiny space, and my children couldn’t lie down,” Aleu recalls.

Thanks to the support from ShelterBox and Rotary, Aleu’s family received a larger, more comfortable tent. “This tent is not a small gesture. For us, it’s a huge support. It makes us feel safe,” she shares.

Despite the ongoing fear of aftershocks, having a secure place to sleep has provided Aleu and her family with much-needed relief. Aleu’s story highlights the profound impact of ShelterBox’s support. Your contributions bring safety and comfort to families like Aleu’s, offering hope in the aftermath of disaster.



*“This tent is not a small gesture.
For us, it’s a huge support.
It makes us feel safe.”*



IMPACT HIGHLIGHT

TURKEY

RESPONSE HIGHLIGHT

UKRAINE

In 2023, Ukraine continued to grapple with the devastating impact of ongoing conflict, forcing millions to flee their homes.

Approximately 6.2 million Ukrainians sought refuge in neighboring countries, while 5.1 million remained internally displaced within Ukraine. Amid ongoing military engagements, the need for humanitarian aid remained critical, particularly as winter exacerbated living conditions.

ShelterBox has maintained a steadfast presence since the onset of the conflict, aiding over 130,000 individuals across Ukraine and Moldova. Our efforts focused on providing essential items such as thermal blankets, clothing, and emergency repair kits. These kits, including tarps for roof repairs and insulation materials, were crucial for families struggling to endure harsh winter conditions. Collaborating

closely with local partners like **NNLPD**, **ReliefAid**, and **Green Chernobyl**, we ensured that affected communities received the support needed to weather the cold months and rebuild their lives.

The destruction of infrastructure left many without electricity, heating, or access to clean water—a situation exacerbated during Ukraine's severe winters. ShelterBox's provision of solar lights, water carriers, and fuel-efficient stoves was instrumental in meeting immediate survival needs. As Ukraine endeavored to reclaim and rebuild, ShelterBox remained committed to standing alongside communities, providing both immediate relief and long-term assistance to those affected by this humanitarian crisis.



Kerri Murray, president of ShelterBox USA, delivers blankets to people in Ukraine in February 2023.



RESTORING THE WARMTH OF HOME AMID CONFLICT

Svetlana and Sergiy live in Kharkiv. They were finalizing their new home when the war began. Not only did the war bring an abrupt halt to their work, but missiles blew out their windows and doors leaving nothing to keep the bitter cold and wind out. Under constant shelling, they were forced to evacuate.

Thanks to the aid provided by ShelterBox, Svetlana and Sergiy have been able to return home. The woodburning stove they received was essential for heating the house and cooking, and it also prevented the pipes from bursting due to freezing temperatures. Sergiy installed the stove through a broken window and, with an unrelenting sense of humor, joked, "There is already a place for the stove, there are three broken windows." Sergiy puts his hands closer to the stove and tells our partner **ReliefAid**, "Yes, it's already so warm that you can't put your hand near it." And by the light of the fire a warm smile spreads across his face."



"I wanted to go home, but there was nowhere to go because there were no windows, doors or radiators." **HALYNA, UKRAINE**

ShelterBox provided aid including a stove and wood for fuel to help Halyna survive the winter in her damaged home.



"We needed heat. We would not have survived without it. Every time we fired up the stove we thought of you. You helped us so much!"

TATIANA, UKRAINE

MOROCCO

On September 8th, 2023, a powerful 6.8-magnitude earthquake struck Morocco, 43 miles south of Marrakesh, making it the strongest recorded in the region.

The quake, felt as far away as Portugal and Algeria, hit just after 11 p.m. local time, catching many people asleep. The worst-affected areas were villages in the Atlas Mountains, where aid delivery was challenging due to large distances and partially-blocked roads. Winter's approach further threatened these communities, which were without adequate shelter.

ShelterBox responded swiftly, providing thousands left homeless with tents, thermal blankets, solar lights, and kitchen sets designed for long-term use. Leveraging our experience from previous earthquake responses in Turkey and Syria, we tailored our efforts to the colder winter climate. Close coordination with the government, local authorities, and Rotary in Morocco's District 9010 ensured effective support. Rotary provided vital assistance with transport and warehouse space near the impacted communities, enhancing our ability to deliver aid to those in need.



Kerri Murray, president of ShelterBox USA, with Fadma, whose husband was crushed in the September 8th earthquake in Morocco. Fadma, wearing white as a sign of mourning, took Murray to the site of her destroyed home.

WE SUPPORTED OVER:
4,400 PEOPLE ACROSS **22** VILLAGE COMMUNITIES IN THE ATLAS MOUNTAINS WITH VITAL AID INCLUDING **1,200** TENTS, **10,000** BLANKETS, AS WELL AS THOUSANDS OF SOLAR LIGHTS AND KITCHEN SETS.

LOSS AND LEADERSHIP IN THE ATLAS MOUNTAINS

Mohamed, a community leader in the Atlas Mountains, shared his harrowing story of loss and resilience. On the night of the earthquake, he was working at a local maternity home when he felt the ground shaking like waves. Immediately, he rushed back to his village, navigating through aftershocks and blocked roads.

Upon arrival, Mohamed faced the heartbreaking news that his wife, young son, sister, nephew, neighbor, and many beloved community members had perished. Despite his profound grief, Mohamed focused on the village's needs. He worried, "What is going to happen to us? Not just me, but the women, children, and old people. How will they survive without houses and shelter?"

ShelterBox responded swiftly, providing essential tents and household items to Mohamed's village. "ShelterBox has been very good to us since day one...The tents are 100% helpful because without them we have no shelter," Mohamed shared.

Despite his immense loss, Mohamed remains dedicated to his community. "For now, I am focusing on the village and its needs...I will stay next to my community and help them with whatever I can," he said. He expressed profound gratitude, "I thank you once again for your help."

Despite losing his wife and son in the earthquake, community leader Mohamed's unwavering dedication to his village underscores the resilience and hope that emerged in the face of unimaginable loss.

We are deeply grateful to The Church of Jesus Christ of Latter-day Saints for their crucial role in covering more than half of the costs for our response in Morocco.

RESPONSE HIGHLIGHT

CAMEROON

In 2023, we made a profound impact on over 63,000 individuals in Cameroon.

Partnering with Public Concern, ShelterBox has been on the ground in Bogo Commune and Minawao Refugee Camp, conducting vital focus groups and capacity-building trainings.

Minawao Camp, located in the far north, is a crucial haven for over 75,000 people fleeing Boko Haram violence in Nigeria. Many of these refugees arrive with deep trauma, having lost loved ones and homes. At Minawao, where ShelterBox provides 90% of the shelter and is the exclusive provider of tents, our role is crucial. Refugees are initially placed in overcrowded communal centers, where disease and violence, particularly against women, are rampant. Our tents offer these families private spaces to heal and start anew.

In addition to tents, we distributed solar lights, groundsheets, mosquito nets, hygiene kits, and essential water filters and carriers.

These supplies significantly enhance the well-being of displaced families, offering them hope and security.

Our support adapts to the needs of each family—providing durable shelters for those unable to return home immediately and emergency shelters for newly displaced families. In 2023, we assisted approximately 9,800 households in the Far North, including refugees, internally displaced individuals, returnees, and other vulnerable groups. By leveraging local procurement, we delivered diverse durable shelter packages with construction materials like tarpaulins, wood, nails, and cement, as well as Community Tool Kits with reusable items such as hammers, nail pulls, and brick molds.

Since 2015, ShelterBox has supported tens of thousands of families in Cameroon.

Abraham, 34, fled Boko Haram twice before settling in Minawao Refugee Camp with his wife Asabe and their five children in January 2023. ShelterBox provided essential emergency and durable shelters to help them rebuild their lives.



“Getting out of the tent and into this shelter was my goal; I’m proud to have achieved it.”

REBUILDING LIFE AS A REFUGEE

One morning, as Apsatu was preparing breakfast, Boko Haram attacked her village, mercilessly killing the elderly and abducting the young. She quickly gathered her children and fled, never to see her husband or eldest sons again. This harrowing escape marked the beginning of a journey filled with unimaginable challenges.

Displaced multiple times since 2015, Apsatu and her family eventually found refuge in Minawao Refugee Camp. Though life in the camp provided some security, it was fraught with difficulties. Determined to rebuild, Apsatu ran a small stall and farmed crops with her children’s help. ShelterBox and Public Concern provided critical support with a transitional shelter and household items. This aid marked a new chapter, allowing Apsatu to build a safer, more stable home for her family.

Despite the camp’s harsh climate, Apsatu remains hopeful, dreaming of a brighter future for her children, rooted in the safety and community of Minawao.

LOCALLY-LED RESPONSES

In 2023, your support made a profound difference, allowing us to reach some of the most vulnerable communities, many of which have the lowest human development index scores.

Here's a closer look at the achievements made possible by your generosity.

BURKINA FASO

In partnership with [HELP](#), we focused on the construction of new transitional shelters, called Sahel Tents, to support over 1,100 newly displaced families. Following feedback from the communities, we acknowledged the need to make them more durable. The construction of a concrete base protects the shelters from flooding and helps to improve levels of hygiene and dignity. The items that form the structure of the Sahel Tents, along with wash kits, cooking pots and water carriers, were locally procured.



ETHIOPIA

The crisis in Ethiopia has left millions in need. Since 2018, we've supported over 80,000 people with essentials like tarps, blankets, mosquito nets, and more. Partnering with [IOM](#), we aided 22,000 in the Afar and Somali regions last year. We're now launching a new project to provide household items and cash assistance to an additional 7,000 households, helping them rebuild and recover amidst ongoing insecurity.



LIBYA

On September 10th, 2023, Storm Daniel struck Libya's northeast coast, causing unprecedented rainfall that led to dam breaches and catastrophic flooding in Derna. Thousands died or went missing, and over 40,000 were displaced. ShelterBox, in collaboration with [ACTED](#), responded by supplying winter clothing, thermal blankets, heaters, kitchen sets, and hygiene items to help affected communities. Aid distribution is now complete, providing essential support to those who lost their homes and belongings.



MOZAMBIQUE

In Mozambique, our partnership with [CARE](#) has enabled us to provide crucial support to displaced families. We've delivered essential shelter kits and household items to over 9,000 people. Through a collaborative initiative with other NGOs, we are now extending our aid to more than 4,000 internally displaced families, supplying emergency essentials such as blankets, kitchen sets, solar lights, and mosquito nets. Additionally, we are examining the environmental impact of our shelter materials, focusing on the reuse and recycling of single-use plastics.



SOMALIA

Somalia faces severe famine and violence, displacing over 700,000 people. The worst drought in four decades, compounded by rising food prices and conflict, has left many in inadequate conditions. Women and children are particularly vulnerable. ShelterBox, in partnership with the [Juba Foundation](#), provided durable shelters and essential items such as solar lights, kitchen sets, water carriers, and mosquito nets. This support aims to offer safety, privacy, and comfort to those displaced, ensuring they have the necessary resources to withstand the challenging conditions.



2023 FINANCIALS: STATEMENTS OF FINANCIAL POSITION*

ASSETS	2023	2022
Cash	\$828,335	\$2,000,125
Promises to give	\$200,000	–
Investments	\$5,010,163	\$3,307,745
Prepaid expenses	\$159,221	\$82,970
Property and equipment	\$41,355	\$31,095
TOTAL ASSETS	\$6,239,074	\$5,421,935

LIABILITIES		
Accounts payable & accrued expenses	\$162,325	\$82,845
TOTAL LIABILITIES	\$162,325	\$82,845

NET ASSETS		
Net assets, unrestricted	\$2,476,749	\$1,889,090
Net assets, unrestricted, board designated reserve	\$3,300,000	\$3,300,000
Net assets, restricted—time and purpose	\$300,000	\$150,000
TOTAL NET ASSETS	\$6,076,749	\$5,339,090

TOTAL LIABILITIES AND NET ASSETS	\$6,239,074	\$5,421,935
----------------------------------	-------------	-------------

* AS OF DECEMBER 31, 2023

View audited financial statements and 990 Forms at ShelterBoxUSA.org

SHELTERBOX USA IS A 501(C)(3) NONPROFIT ORGANIZATION IN THE UNITED STATES AND INCORPORATED IN THE STATE OF FLORIDA: EIN 20-0471604. A COPY OF THE OFFICIAL REGISTRATION AND FINANCIAL INFORMATION MAY BE OBTAINED FROM THE DIVISION OF CONSUMER SERVICES BY CALLING TOLL-FREE WITHIN THE STATE (1-800-HELP-FLA OR WWW.800HELPFLA.COM). REGISTRATION DOES NOT IMPLY ENDORSEMENT, APPROVAL, OR RECOMMENDATION BY THE STATE. GIFTS ARE TAX-DEDUCTIBLE TO THE EXTENT ALLOWED BY LAW.

2023 FINANCIALS: STATEMENT OF FINANCIAL ACTIVITY*

SUPPORT & REVENUES, UNRESTRICTED	2023	2022
Contributions	\$13,635,698	\$8,828,067
Contributions, in-kind	\$67,909	\$95,930
Interest income, net	\$202,342	\$14,407
Releases from restrictions	\$150,000	\$4,788,398
TOTAL SUPPORT & REVENUES, UNRESTRICTED	\$14,055,949	\$13,726,802

EXPENSES		
Program services	\$10,749,215	\$10,291,483
Management and general	\$1,456,166	\$1,063,021
Fundraising	\$1,262,909	\$1,029,155
TOTAL EXPENSES	\$13,468,290	\$12,383,659

Change in net assets, unrestricted	\$587,659	\$ 1,343,143
------------------------------------	-----------	--------------

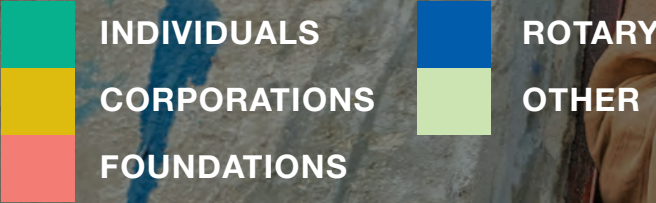
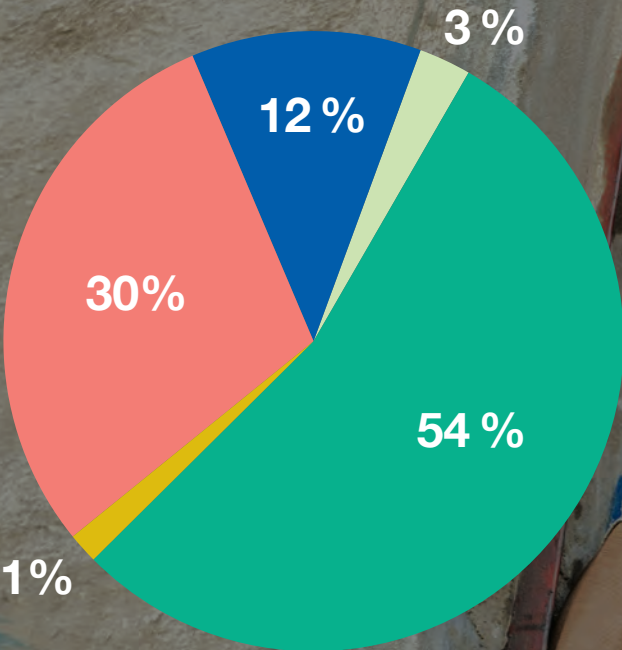
SUPPORT & REVENUES, RESTRICTED		
Contributions	\$300,000	\$4,808,586
Releases from restrictions	(\$150,000)	(\$4,788,398)
CHANGE IN NET ASSETS, RESTRICTED	\$150,000	\$20,188

NET ASSETS		
Change in net assets	\$737,659	\$1,363,331
Net assets, beginning of year	\$5,339,090	\$3,975,759
NET ASSETS, END OF YEAR	\$6,076,749	\$5,339,090

* AS OF DECEMBER 31, 2023

2023 FINANCIALS: GIVING BY CONSTITUENT TYPE

ShelterBox relies on private support from individuals, companies, foundations and institutions, civic groups, and schools.



After the 2022 floods in Pakistan wiped out their homes and livelihoods, Shamal's family was left with nothing but the belongings they could carry. Their entire world was washed away, leaving them to rebuild from the ground up.

2023 FINANCIALS: ALLOCATION OF EXPENSES

TOTAL REVENUE
\$14M

TOTAL EXPENSES
\$13.4M

EXPENSES TOWARD
PROGRAM SERVICES
\$10.7M
went toward ShelterBox
programs to provide
emergency shelter and supplies.

EXPENSES TOWARD
OPERATIONS
\$2.7M
covered operating expenses.



After severe flooding submerged one-third of Pakistan, our efforts focused on constructing durable shelters to support affected communities.



2023 FINANCIALS: TRANSPARENCY



Guidestar

ShelterBox USA is a GuideStar Platinum Participant, committed to donor transparency and financial and operational efficiency.

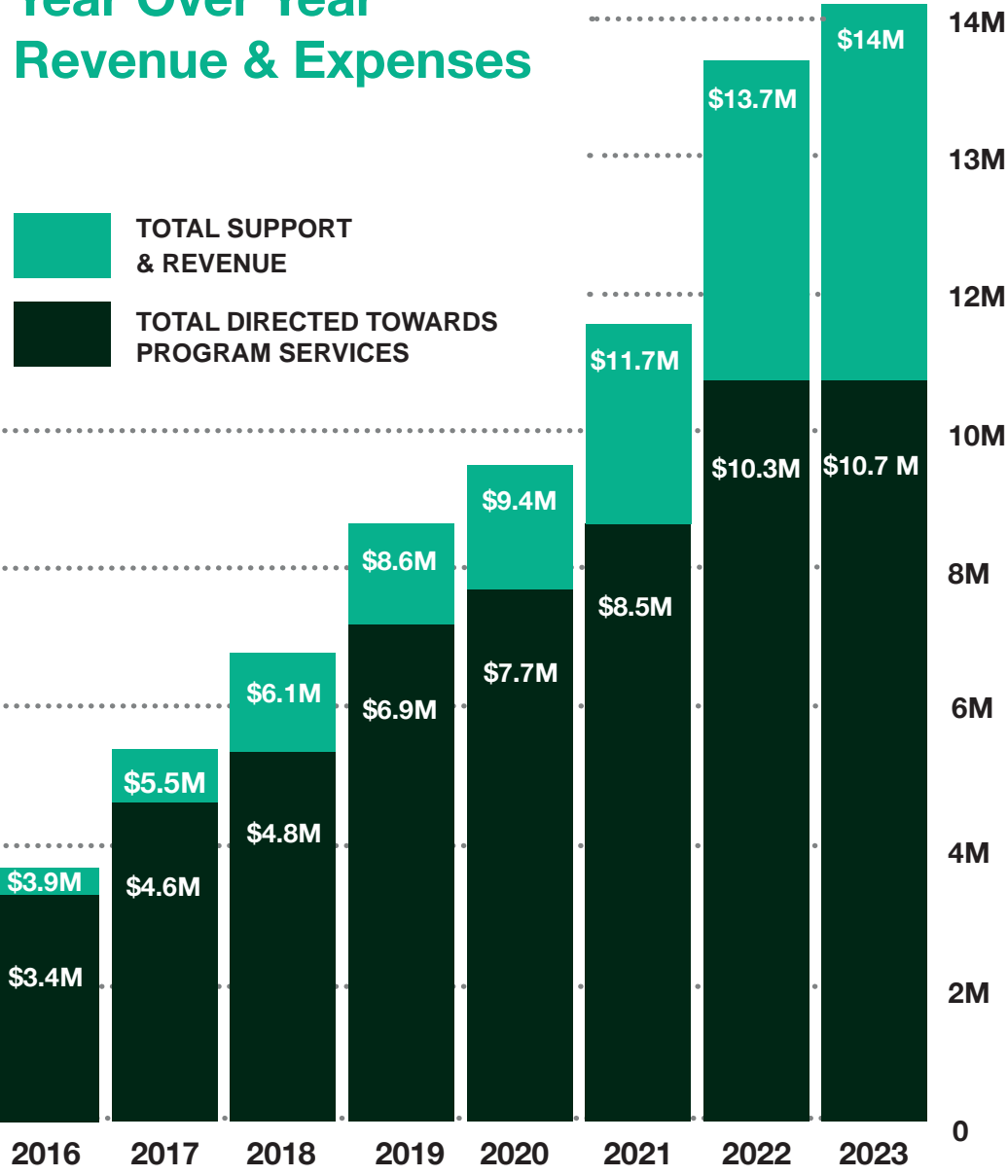


Charity Navigator

ShelterBox USA is the recipient of Charity Navigator’s “4-Star” rating for financial health, accountability, and transparency.

2015	★★★★	2021	★★★★
2016	★★★★	2022	★★★★
2017	★★★★	2023	★★★★
2018	★★★★		
2019	★★★★		
2020	★★★★		

Year Over Year Revenue & Expenses



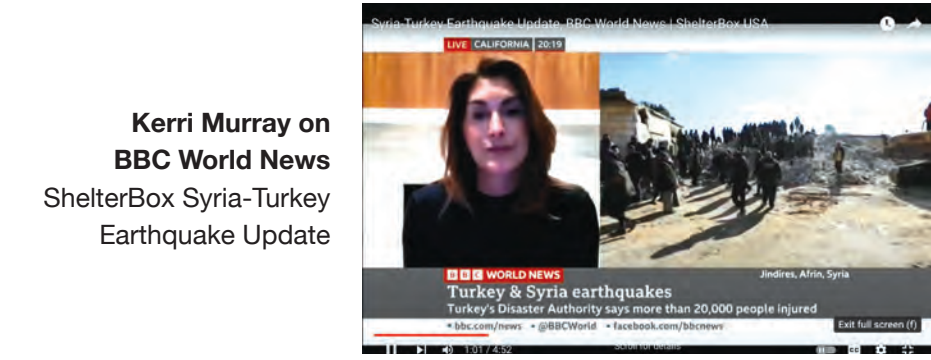
2023 SHELTERBOX MEDIA HIGHLIGHTS



Kerri Murray on CNN, 12/23 ShelterBox Cold Weather Response/Gaza plans



Our Annual ShelterBox USA International Women’s Day Event featured a panel of transformational leaders working to advance women’s rights and push for greater gender parity: Hannah-Beth Jackson of Hannah-Beth Jackson & Associates, Gwyn Lurie of Montecito Journal Media Group, Kathy Odell of Women’s Economic Ventures, and Katya Armistead of UC Santa Barbara.



Kerri Murray on BBC World News ShelterBox Syria-Turkey Earthquake Update

NPR, “The World”, KCLU Radio Marco Werman interviews ShelterBox USA President Kerri Murray on the lifesaving work of ShelterBox.



Kerri Murray on Scripps News National, 12/21 ShelterBox Cold



VOLUNTEERS POWER SHELTERBOX



- ▲ A massive thank you and congratulations to our **Adventurers** who hiked 22 miles in August, 2023, and raised over \$30,000 on our first-ever Adventurers Trek in Yosemite!
- ▼ **ShelterBox Adventurer** Dr. Kella B. Price, CEO and fitness champion, founded Healthy Fit Foundation. From 7x IRONMAN to the RAGBRAI, she's raised \$10,000 for Rotary and ShelterBox.



- ▼ Celebrating 60, **ShelterBox Adventurer** Kate hiked 604 miles and ascended 73,120 feet in Colorado, raising \$2 per mile for ShelterBox's mission.



- ▲ Three generations of Wisconsin women joined the **ShelterBox Adventurers** hike through Yosemite Valley in August 2023 raising over \$15,000 for ShelterBox. **ShelterBox Ambassador and Adventurer** Frances Wargolet, 77, her daughter Katrina Wargolet Kyne, 49, and granddaughter Sophie Kyne, 13, tackled North Dome and Mount Hoffman to support ShelterBox's mission.

- ▼ **ShelterBox Ambassador** Lora Williams Helmer with Anna, a Rotary Youth Exchange student who raised \$600 for ShelterBox's global responses.



Jane is a ShelterBox Ambassador who would rather help others with her journey than just run for herself. You may remember Jane from "Jane's Route 66", when she ran the 135-mile Denali Highway in Alaska and raised almost \$9,000 for ShelterBox USA for her 66th birthday.



- ▲ **ShelterBox Ambassador** Don Crost recently hit the road in his 1953 Chevy pickup truck to raise funding and awareness for our work to deliver essential aid to communities devastated by disasters.



- ▲ **ShelterBox Ambassador** Tom Deuson hosted his 11th annual ShelterBox Ride event in June where bikers raced through the hills of New York fundraising for SBUSA. Over his 11 years hosting this event, he has raised over \$100k in donations.



- ▲ In December, 2023, SBUSA welcomed back their **Supporter Conference** in Las Vegas after a pause due to the pandemic. It was a wonderful opportunity to get our supporters back together in person to connect, learn, and collaborate.
- ▼ **Ambassadors** David & Melanie Sturrock hosted another successful SHINE dinner in November in Western Pennsylvania raising a gross total of over \$100k after three years of hosting this wonderful event.



AMBASSADOR FUNDRAISERS

Thank you to our volunteers who raise money for ShelterBox’s humanitarian work. Their lifetime fundraising amounts are listed below.

\$600,000+ LIFETIME

Jim Carriere
District 6440 Team
– Donna Lee Gullely
– Maria Peterson
– Ross Spencer

\$500,000+ LIFETIME

Yi Shun Lai

\$400,000+ LIFETIME

Louis Turpin
Jack Young

\$300,000+ LIFETIME

Wayne Chiles
Mark Dyer
Jack & Nancy Faddegon
Pete Griffith
Larry Palant
James Pickett
Mary Sloan & Jeff Lichty
Allan Syphers

\$200,000+ LIFETIME

Tom Deuson
Brian Glenn
Tom & Marie Grant
Bruce Heller
Dick Isackson
Don Jorgensen
Greg Krauska
Jim Miller (NC)
Gary Olsen

Eric Reise
Steven Tonkinson
Bill Woodard

\$100,000+ LIFETIME

David Addor
Bill Ballou
Ed Bell
Peggy & Malcolm Carlaw
Bill Decker
Herman Dixon
Nancy Dodge
Erik Elsea
Parker Emerson
Katherine Fick
Gary Friedman
Lora Helmer
Steve Horan
Ken & Rhonda Kaplan
John Keane
Susan Klock
Leo Lawrenson
Linda Mayger
Mark Midyett
Sollace Mike Freeman
Michael Mira
Len Nemeroff
Reis Pearson
Pamela Pine
Wayne Robinson
Marshall Stanton
David & Melanie Sturrock
Kieran Walsh & Greg Vik
Kelly Wike
David Wolcott

\$75,000+ LIFETIME

Jeanette Bullock
Dan Christianson
Rich Comins
Mark Cooke
Michael Hicks
Derek Locke
Ned Morris
Dave Nichols
Michael Sears
Kenneth Thompson †
Brittney Woodrum
James Yeats

\$50,000+ LIFETIME

Wallace Brown
Jeff & Lisa Deatherage
Stephen Demeranville
Matt Gerber
Mitone Griffiths
Jessica Gutzwiler
Laura Kerckhoff
Reese Mates
Douglas Maurer
Tim & Melinda Osburn
Kathleen Pierz
Martin Postma
Jan Reed
Dale Rubinkam
Jim Samuelson
Marlise Skinner
William Tuszyński

\$25,000+ LIFETIME

Holly Anderson
James Bacca
Liz Barron
Margaret Blaurock
Bonnie Boyle
Wes Clanton
Linda Cook
Bill DiBiasio
John Freeman
Steve Gibson
David Hall
Anthony Hansen
Chase Harr
Glenn Harris
Tricia Sharp & Michael Hendon
Tom & Mary Hodson
Michael Howe
Gerald Iwerks
Kim Kim
Andrew Kuby
Trannie Lacquey
Ron & Jean LaDucer
Thomas Lloyd
William Long
John Marshall
Jim Mason
Mark McCain
Theresa Mohan
Barb Morgan
George Morrison
Mukund Nori
Mike Robinson
Ryan Schaafsma
Traci Schauermaun-Oliver

Marilyn Young Skogland
Frank Spears
Kathryn Sweeney
Anthony Thompson
Roland Weimer

\$15,000+ LIFETIME

Gary Abbey
Dean Caldwell
Delphine Clough
Tim Connelly
David Hall
Gavin Craddock
Ann Crandall
Bruce Dearnley
Steve Goble
Judy Hutcherson
Susan Ireland
David Jessich
Michael Kruse
Steve Lakner
Steven Lease
Connie Lewis
Tammi Mayfield
Timothy McCully
Jim Miller (OR)
Ray (Chip) Muston
Jeannine Murrell
& Pamela Jean Myers
Susan Phelps
Jesse Pine
Chris Rakowitz
Stephen Savrann
Sondra Scott
Dan Steelhammer

Ambassador Fundraisers continued

Larry Stenger
Henry Tur
Burton Witthuhn
Andrew Yu
Dean Caldwell
Sondra Scott
Connie Lewis
Susan Phelps
Burton Witthuhn

\$10,000+ LIFETIME

Jack Bishop
Bradford Bixler
David Borgen
Jeffry Cadorette
Meghan Camp
Elaine Chan
Ron Darrah
Leslie Gamel
Phil Gillespie
Mary Gordon
Bob Haeuser
Frank Hale
Larry Harrison
Michael Hendon
Jay Hislop
Van Joffrion
Selean Koury
Ryan Lampasona
Pete Mulford
Malcolm Peterson
Lawrence Petrash
Jerry Picaman
Robert Reid
Rich Ridenour

Peter Scott
Andrea Shields
Lawrence Southwick
Andy Stewart
Dean Veneman
Stan & Debbie Wall
Fran Wargolet

\$5,000+ LIFETIME

Jalain Bagley
Frank Bales
Sherri Ball
David Berg
Elsa Cade
Karen Coe
Jim Coleman
Dennie Dyer
Keith Einstein
Ryder Evans
Steve Frazier
Ed Frey
Alexandra Goodale
Andres Goyanes
Barbara Hickman
Tammy Hunsinger
Bill Jahn
Karim Jaude
Fran Jeffries
PDG Larry Jones
Heather Kellen
Ronald Klieverik
Michael Lee
Rob Lucke
Cristina I. Mas
Kara Lapso & Josh Mohr

Steve Morreale
Carol Pipitone
Ted Pleibel
Michael Pugh
Dick Sant
Eric Schalla
Skip Sockell
Phyl Strawbridge
Cynthia Swanson
Martin Thompson
Shana Thom
Mahesh Turaga
Joseph Urda
Steven Wagenseil
Ryan Wallin

\$2,500+ LIFETIME

Chris Alexander
Vince Barnes
David Bisbee
Janie Borsh-Symons
Jeanne Bruns
Bruce Corson
Don Crost
Paul Daniels
David Eby
Alicia Elkins
Leslie Irish Evans
Daniel Flynn
Penny Gee
Michael Grant
Edward Hamilton
Jeff Hobert
Greg Horn
Dennis Ivie

Sonja Jamilla
Carrie Ledgerwood
Robert MacGregor
Don'll McBride
Charles Pulliam
Susanne Schwarz
Fayette Stewart
Larry Symonds
Michael Scott Weaver
Peter Webster
Jack Werner
Carol Williams

\$1,000+ LIFETIME

Amy Alford
Robert Barnes
Meredith Bocek
Gary Boe
Christy Brown
Patricia Case
Joseph Chambers
Richard Commisso
Robert Conklin
Lester Cooper
Ronald Crawford
Robert Doerr
Dan Dudzinski
Phil Duloy
Bettye Dunham
Amanda Eyer
Phil Faris
Alyson Farmer
Russell Fericks
Todd Finklestone
Bruce Fogelberg

Mary Garrison
Jean Hanham
Constance Kennedy
Kim Lardie
Ron Mabry
Stephen Masterson
Jim McDonald
Kyle McGrath
Ryan Mielcarek
Lawrence Mitchell
Paul Muck
Ivan Novak
Donald Nye
James O'Reilly
Gary Permenter
Dan Perron
Paul Raino
Jim McDonald
& Chelsea Robertson
Debra Robertson-Fantz
Scott Robinson
Casey Robinson
Richard Rodriguez
Becki Saltzman
Douglas Simpson
Eric Slaughenhaupt
Ann Thomas
Fernando Vieira
Stan Vlademar
Morgan Wiggers
Richard Woodford
Minah Zamejtis-Brown
Eric Zawilski

AMBASSADOR HALL OF FAME

We welcome and recognize the following individuals to our esteemed group of volunteers who have raised more than \$100,000 to support the mission of ShelterBox.

<i>David Addor</i>	<i>Katherine Fick</i>	<i>Susan Klock</i>	<i>Wayne Robinson</i>
<i>Bill Ballou</i>	<i>Mike Freeman</i>	<i>Greg Krauska</i>	<i>Yi Shun Lai</i>
<i>Edward Bell</i>	<i>Gary Friedman</i>	<i>Leo Lawrenson</i>	<i>Mary Sloan & Jeff Lichty</i>
<i>Peggy & Malcolm Carlaw</i>	<i>Brian Glenn</i>	<i>Linda Mayger</i>	<i>Ross Spencer</i>
<i>Jim Carriere</i>	<i>Tom & Marie Grant † †</i>	<i>Mark Midyett</i>	<i>Marshall Stanton</i>
<i>Wayne Chiles</i>	<i>Pete Griffith</i>	<i>Jim Miller (NC)</i>	<i>David & Melanie Sturrock</i>
<i>Bill Decker</i>	<i>Donna Lee Gulley</i>	<i>Mike Mira</i>	<i>Allan Syphers</i>
<i>Thomas Deuson</i>	<i>Bruce Heller</i>	<i>Len Nemeroff †</i>	<i>Steven Tonkinson</i>
<i>Herman Dixon</i>	<i>Lora Helmer</i>	<i>Gary Olsen †</i>	<i>Louis Turpin</i>
<i>Nancy Dodge</i>	<i>Steve Horan</i>	<i>Larry Palant</i>	<i>Kieran Walsh & Greg Vik</i>
<i>Mark Dyer</i>	<i>Dick Isackson</i>	<i>Reis Pearson</i>	<i>Kelly Wike</i>
<i>Erik Elsea</i>	<i>Donald Jorgensen</i>	<i>James Pickett †</i>	<i>David Wolcott</i>
<i>Parker Emerson</i>	<i>Ken & Rhonda Kaplan</i>	<i>Pamela Pine</i>	<i>Bill Woodard †</i>
<i>Jack & Nancy Faddegon</i>	<i>John Keane</i>	<i>Eric Reise</i>	<i>Jack Young †</i>

IN MEMORIAM



MIKE ROBINSON

In loving memory of Mike Robinson, we honor a cherished volunteer who profoundly impacted our ShelterBox family. Since joining us in 2018, Mike's unwavering passion and dedication made him a beacon of service and inspiration. He tirelessly supported our mission, notably achieving full Rotary Club engagement in his territory. Mike's legacy lives on through his remarkable contributions and the hope he brought to those in need. We remember his kindness and spirit with deep gratitude and celebrate his enduring impact on ShelterBox and Rotary.



GARY OLSEN

In loving memory of Gary Olsen, a dedicated ShelterBox board member and Ambassador Hall of Fame inductee who raised over \$100,000. Gary's journey began with a chance Rotary Club meeting in Florida, leading him to champion our cause for more than a decade. Notably, he received the Presidential Volunteer Service Award for his exceptional commitment. Gary's legacy of service and impact continues to inspire us. We honor his memory and profound contributions.





GIVE A HOME



Real Estate Professionals Making a Difference

As a member of ShelterBox's **Give a Home** program, you can inspire your real estate clients and give them a sense of purpose each time they use your services by donating the cost of a home for each home sold. With each donation to ShelterBox you will provide emergency shelter and life-saving supplies to families who have lost their homes and belongings to disaster or conflict.

All members receive recognition on our **Give a Home** members web page and exclusive updates on the operations of ShelterBox.

Learn more or become a member at
ShelterBoxUSA.org/giveahome



STOCK THE BOX



Helping Us Restock and Prepare for Disaster

July marks the launch of ShelterBox's annual **Stock the Box** fundraiser to fill our five strategically placed warehouses with pre-positioned aid so we can mobilize quickly and effectively when disaster strikes. In 2023, our incredible supporters raised over \$200,000 to restock our warehouses with emergency shelter and supplies to support families displaced by disaster. Congratulations and thank you to our top fundraisers.

Become a member at
ShelterBoxUSA.org/stockthebox



LEAVE A LEGACY



Leave a Legacy with ShelterBox

A **planned gift** will help ShelterBox build toward a future where no family is left without shelter. Your thoughtful and generous support enables us to build up supplies and prepare for catastrophes, whatever the scale.

Leaving a planned gift can help you give more to the ongoing work of ShelterBox than you may have thought possible—providing continued support long after your lifetime.

Become a Stock the Box fundraiser at
ShelterBoxUSA.org/shelterbox-planned-giving

FOUNDATIONAL GIVING

\$3,000,000+

*The Church of Jesus Christ
of Latter-day Saints*

\$250,000+

Crystal Springs Foundation

\$100,000+

Zegar Family Foundation

\$50,000+

*Arch Group Foundation
Charina Endowment Fund, Inc.
The Lotus Charitable Fund
Mey Share Foundation*

\$25,000+

*Anonymous
Commonwealth Charitable Fund
The Kiva Foundation
Linden Family Foundation
Snyder Charitable Foundation*

\$10,000+

*Arizona Community Foundation
Community Giving
East Bay Community Foundation
Longview Foundation
The McCutchen Foundation
San Diego Foundation
The San Francisco Foundation
Spungen Family Foundation
Tao Jones Charitable Foundation
The Adele A & Harold J Westbrook Foundation*

\$5,000+

*American Gift Fund
The Community Foundation
of Middle Tennessee
The Community Foundation of Will County
The Philadelphia Foundation
Roger S. Firestone Foundation*

\$2,500+

*Community Foundation
of North Central Washington
Orange County Community Foundation
The Philadelphia Foundation
Santa Barbara Foundation
Sonora Area Foundation*

CORPORATE GIVING

\$250,000+

*Fidelity Charitable Gift Fund
Schwab Charitable Fund*

\$50,000+

*IDEX Foundation
J. P. Morgan Charitable Giving Fund
PGB Trust & Investments of Delaware
QAD Inc.*

\$25,000+

*American Endowment Foundation
Arch Capital Services LLC
Give Lively Foundation Inc.
The Northern Trust Company
One4All Charitable Fund
Vanguard Charitable
Vanguard*

\$10,000+

*Caruso Produce
Christ Episcopal Church
Covenant Foundation
Excess Line Association
of New York Mimecast
Our Saviour's United Church of Christ
Raymond James Charitable
UC Investments
U.S.Charitable Gift Trust*

\$5,000+

*Ameriprise Financial
Bank of America Charitable Gift Fund
Bright Funds Foundation
Combined Federal Campaign
Crestone Capital
Goldman Sachs Charitable Gift Fund
Liberty Mutual Matching Gift Program
Merrill Lynch
Microsoft Matching Gifts Program
Nacoochee Presbyterian Church
Naples Council on World Affairs Inc
Renaissance Charitable Foundation, Inc.
Sharky's Woodfired Mexican Grill
T. Rowe Price Program for Charitable Giving
TAG Charitable Foundation*

\$2,500+

*Bishop Hoffman Catholic Schools
Blackbaud
Cauze Charitable Fund
Fidelity Brokerage Services LLC
Gartner
Google Matching Gifts Program
Longwave Financial
Morgan Stanley Gift Fund
NVIDIA
PayPal Giving Fund
SCS Engineers
Solarity Credit Union
Summerland Winery
TIAA Charitable Giving Fund
UBS Financial Services
Waterford School*

THE SHELTER CIRCLE

MARQUEE / \$1,000,000+ LIFETIME

Anonymous Donor
Anonymous Donor
Chrystal Springs Foundation

VISIONARY / \$100,000+

Anonymous Donor
Don Hamilton

PIONEER / \$50,000+

Anonymous Donor
Zeke & Angela Dumke
Donald Ellis & Sherry Chang
Jeffrey & Cindy Harger
Allen E. Perrel
Judy Pigott
Brad Singer & Kerri Murray

INNOVATOR / \$25,000+

Anonymous Donor
Barbara & Steven Barney
The Block Family Foundation
Marilyn Dakin
EerNisse Foundation
Peter & Talia Melnick
Michele J. Olsen
David & Melanie Sturrock
Rick & Margarita Tonkinson
Steven Tonkinson

SUSTAINER / \$10,000+

Anonymous Donor
Anonymous Donor
Anonymous Donor
Joan M. Anderson
Sherri Ball
Peter Bauer
The Burkehaven Family Foundation
Barbara & Mark Campbell
Jean & Thomas Carroll
Jay & Ann Davis
Katherine J. Fick
Nancy & Richard Goldcamp

Martin & Kerrilee Gore
Janet F. Grey
Hullinger Family Foundation
Shirley V. Jones
Charles Kelley
Jeffrey Kohne
Ronald & Winnifred Krueger
Katrina Kyne
Margaret Leydic-Boyd
& Hayden Boyd
George & Marilyn Max
Marie & Robert McInnes
Thomas & Rose Mary Meyer
James Miley
Andrew Morse
Penny Ablin & Kerry
Robert J. Murray
Elizabeth & Gregory Myers
Osborn Family
Charitable Fund
Pam Pine & Rick Abernethy
Jeffrey & Amy Rhoads
Spungen Family Foundation
The Summer Family Fund
Gabriela & Nick Swinmurn
Tarbutton Family Foundation
Pamela & Max Underwood
Jay Wiedwald
Musa Wolcott
Alan Zagoria

CHAMPION / \$5,000+

Anonymous Donor
S & D Basile
Charitable Fund
Donna Bennett
& Jim Crawford
Rajeev Bhaman
Michael & Debra Binns
Crystal Bond
Joan & David Brausch
Dennis Breen
Rory Cahoon

Jack & Sylvia Camiel
Kim Cantin
Maya Chorenge
Arpad Molnar
Cobb Foundation
Mary Courneya
Deborah Dalby
Duerig Donor Fund
Bruce & Julie Dunbar
Judy Dutcher
Sharen & James Dyer
Thomas J. Eddinger
Henry & Lindsay
Ellenbogen
Eric Ephraim
Matt Gerber
Joe Grainger
Patsy Gredwig
Gwen & Nic Guddal
Nick & Pam Hackett
Leslie Haight
Heller Family
Charitable Fund
Allan Herzog
Marilyn Hoban
Steve & Heather Horan
Philip & Diana Hunter
Paul & Catherine
Imwalle
Lowell & Celia Jacoby
John J. Moller Family
Foundation
Rosemary Kehoe
Jane & Mark Kinghorn
The Kirby-Jones
Foundation
Kristen Klingbeil-Weis
& Karl Weis
Heide Lankeit
Evan M. Lebson
Lonna J. Lysne
Kathryn & Tim Mahaffy
Craig & Cheryl Matheny

Peter & Helen Maxwell
Parris McBride-Martin
Elizabeth Storm
McGovern
David & Sarah
McKenney
Phil McPeck
Bruce McRoy
& Cathy Cash
Mary Kay Melton
K. Olson
William O'Malley
Jonathan Orpin
David Owen
Carrie Palmore
Su Part
Katherine Pierce
Frances R. Posel
Mary & Ellen Radtke
Jan & Phil Reed
Holly Rickett
Tara Riemer
Paul R. Rothman
Bill Sakash
Fred & Joan Schaafsma
Schneider Revocable
Trust
Robert Schott
Mark Semegen
Barrett K. Sides
Kurt & Katherine
Simon
Jorgen Skovbjerg
Ron Snyder
Tana Sommer-Belin
Spaulding Family
Foundation
Shirley & Stuart Speyer

Erinn Steele
Mary T. Stewart
Daniel A. Stucka
The Waitte Foundation
Frances Wargolet
Benjamin Wisner
& Sonia Kruks
Willi & Ed Wolcott
David Wolcott
Ronald James Wong
Zelenda Foundation

SUPPORTER / \$2,500+

Anonymous Donor
David R. Addor
Penny Ablin & Kerry
Kilgore Family Fund
Howard K. Allen
Masjid Al-Tawheed
Mary Jo & Fred
Armbrust
Penelope Attwell
Beth A. Augustus
Craig Bargowski
Allison Beale
James Beesley
Linda & Lawrence Black
Dale Bowers
John Boyd
Margaret Bull
William Burns
Ann H. & Allen Bush
Kenton & Susie Campell
Alexander & Joyce
Carasa
Peggy & Malcolm
Carlaw
James & Nancy Carriere

Ralph & Joyce Carter
Victor E. Cary
Helen Cerulli
Fred & Kate Chen
Becky Jo Clark
Rita T. Cooper
Larry Curtis
Peter & Vivian de Kok
David de L'Abre
Bill & Julie Decker
Megan Deluhery
Floyd Dillman
Baxter Donaldson
Richard & Janet Kubois
Samuel R. Dugan
William & Margaret
Durall
Joseph & Paula Eash
Brillo-Sonnino Family
Foundation
Phil & Beth Ferrari
Read T. Fleming
Anthony Franchini
Ellen McCabe
Robert Frisch
Christine Gabrielli
Norma & Jason Gans
Jeffrey Gerald
Mary Giroux
Tom & Mary Gooding
Leigh & Bill Goodwyn
Jonathan & Julia
Gordon
Greg & Shannon
Gottesman
Elizabeth & Peter Gray
Gwenda & Wilhelm
Groskurth
Donna L. Guley
Chad Heese
Margareth J. Heiser
Jill Hennesen
Anton Inglese

Samer Jaber
Curtis Jang
Gillett Johnson
Barbara A. Jones
Donald & Kathryn
Jorgensen
Steven & Nancy Kassel
Kathleen T. Gabriele
Rosaleen D. Power
Francis J. Pugliese
Lucy Rechel
Susan Ringoen
Richard & Karen
Robinson
Rand Rosenberg
& Teran Davis
Colleen Rowe
Jane C. Rust
Mary Sargent
Kathy Schulte
Steven Shama
& Jeannie Lindheim
Patricia A. Shaw
Diane Shock
Mary Sloan
& Jeff Lichty
Kathryn & Mike Stack
Geroge & Denise Stadler
William & Suzanne
Sutton
Katie Tomo
Alex & Dean Varner
Anne Vollmer
The Walker-Silverman
Family
Lance Waller
David P. Warshaw
Chris Weatherhead
Marian Weaver
Alex Weil
Diana Winston
Zamichow Jabs
Foundation
Stuart & Susan Palmer

Amy & David Palmer
Robert A. Parsons
Reis Pearson
Gail L. Peek
The Philadelphia
Foundation
Elleni Pippis
Rosaleen D. Power
Francis J. Pugliese
Lucy Rechel
Susan Ringoen
Richard & Karen
Robinson
Rand Rosenberg
& Teran Davis
Colleen Rowe
Jane C. Rust
Mary Sargent
Kathy Schulte
Steven Shama
& Jeannie Lindheim
Patricia A. Shaw
Diane Shock
Mary Sloan
& Jeff Lichty
Kathryn & Mike Stack
Geroge & Denise Stadler
William & Suzanne
Sutton
Katie Tomo
Alex & Dean Varner
Anne Vollmer
The Walker-Silverman
Family
Lance Waller
David P. Warshaw
Chris Weatherhead
Marian Weaver
Alex Weil
Diana Winston
Zamichow Jabs
Foundation
Stuart & Susan Palmer

David Addor
Stephen Albright
Judy Allen
Gail Anderson
Paul Andrade
Scott Arbuckle
Sarah Avalon
Jim Bacca
Crista Bailey
Christine Banks
Michael Barnard
Roger Barnes
Elizabeth Z. Barron
Ronald Bass
Kathryn Bauchelle
Camilla Baycroft
Shelly Beard
Thomas Bentley
Katherine Bertolucci
Jenni Betts
Ilene Bilenky
Diana Black
Lane & Margaret Bloebaum
Nancy Bluestein-Johnson
Robert & Camille Born
Juliyeen Bouknight
Anita Bradford
Martin Brown
Nancy L. Brown
Terren Brown
Vicki Brown
Terry Burgee
Molly Butler
Shandra Campbell
Jim Carriere
Cassandra Carter
Lilian Carter
Kim Carlidge
Riksene Cavanaugh
Manuela Cavaness
Nagib Chowdhury
Stephen Clegg
Clarinda Conger

Corinne Corley
Lynn Cox
Elizabeth Coyle
Wendi Craig
Jessie Crain
Patricia Curran
Michael & Jo Ann Cutler
Jim Bacc
Kathleen Dahl
Jeff Dahmer
Deborah Dalby
Debbie Daugherty
Susan Davis
Peter & Vivian de Kok
William C. Deanhardt
& Sandra Milan
Cindy Deichmann
Melanie Deville
Sandra Dewitz
Jenni Betts
Ilene Bilenky
Diana Black
Lane & Margaret Bloebaum
Nancy Bluestein-Johnson
Robert & Camille Born
Juliyeen Bouknight
Anita Bradford
Martin Brown
Nancy L. Brown
Terren Brown
Vicki Brown
Terry Burgee
Molly Butler
Shandra Campbell
Jim Carriere
Cassandra Carter
Lilian Carter
Kim Carlidge
Riksene Cavanaugh
Manuela Cavaness
Nagib Chowdhury
Stephen Clegg
Clarinda Conger

John Galbraith
Raymond Galloni
Lois L. Ganzi
Cory Garren
Paul Gerten
Cynthia Gibbons
Laura Gibson
Casey Giglio
Martin Gore
Ruth Graham
Robert Greenstreet
Susan Greif
Evelyn Gross
Ann Grossman
Bradford Grossman
Robert Gump
Jane Gutman
Jessica Gutzwiller
Michel Haase
Kathy Haenszel
Dennis Hall
Kristopher Halverson
Stephanie F. Hansen
Anthony Hansen
Gwen Harrell
Susan Harsh
James Hebert
Chad Heese
Gwen Hensley
Emily Herder
Elizabeth Hiltcher
Mr. James Holden
Stacy Holybee
Sally Hopkins
Cynthia A. Hosick
Shelley Hostetler
Don Huynh
Sheikh Iqbal
Kathleen Irvin
Mogens Jensen
Ada Johnson
Cindi Johnson
Gina Johnson

Karen Jordan
Deborah Karmozyn
John Keane
Evan Keller
Louis H. & Lynda
L. Keller
Sunny Kellerman
Geoffrey Kennedy
Adam Ketterman
Jeffrey Kiester
Mark King
Paula Kingsley
Jean Kinkead
John & Sue Kowalski
Jamie Lamb
Ms. Jeanne Lange
Cindi Larimer
Margaret Leaman
David Lennert
Jean R. Lewis
Pete Lohr
Cynthia Lomenick
Ed Looney
Lydia Luciano
Sal Lucido
Kimberly C. Lundstrom
Elizabeth M. Lynch
Daniel Mace
Kathleen Magoolaghan
Susan Marshall
Keith L. Martin
Crystal Martin
Katherine Martin
Lisa Marz
Tammy Mayo
Karen C. McAllister
Jessica McCaffrey
Patricia McCleese
Jill Meade
Richard Meek
Mary Kay Melton
Charles Michael
Annie Middleton

Anne B. Miller
Juliana R. Mingle
Caleb Mitchell
George Molteni
Mark R. Montgomery
Elaine Montgomery
Adrien Mooney
Elise Nguyen
Phil Nicolay
Mike D. Norcia
Richard W. Norwood
Lisa O'Brien
Elizabeth Oliver
Mike Onzay
Larry Palant
Kelly Paz Soldan
William Peck
Roland Penttila
Rebecca Perez
Jan Perry
Beth Perry
Jacqueline Pfeiffer
Pete Phillips
Bruce Plenk
Stephen Plocher
Laura Plumley
Beth Powell
James Prest
Kay Preston
Judy K. Prince
Thach Quach
John Raine
Therese Rasmussen
Fredric Rau
Stephanie Reardon
Jody Redmann
Delores Ritzman
Wendy Roberts

Lindsay Robinson
Michael Rodger
Sean Roan
Ian Rosenblum
William R. Roser
Ms. Angela Russell
Mrs. Mary Sallee
Norman Samuelson
Delfino Sanchez
Garreth Santosuosso
Penny Scarberry
Melissa Schott
Jan Schumann
Peter Scott
Mark Scott
Kristen Seeger
Andrew & Paige Selking
Ellen L. Shapiro
Jim Sharkey
Craig Silverman
Cherie L. Sirois
Kenneth Slickers
Nadia Slisarenko
Janet Sorrentino
Dean Stansel
Judy Beckett
Marnella I. Stout
Stephanie Streb
Swan S. Stull
Daniel Sutherland
Bettie Swiontek
Susan Talbot
Donald Tartasky
Andreas H. Teich
Donna Thal
Katie Tomo
Roger & Karen Tormoehlen
Jonah Triebwasser

Louis Turpin
Rick & Heather
Lee Valtee
Sonia Van Zyl
Bradley Vassallo
Robert Verity
Gary Vetses
Keith Wallace
Michell Ward
Edward Wert
John Whelan
Kelly Wike
David Wilkins
Joyce Williams
Elliott B. Williams
Jennifer Wilson
Mary Wilson
Stephen Worsham
Ms. Marilyn Young
Skogland

ROTARY GIVING

Hero Clubs are recognized for support of \$1,000 or more in support from clubs or members.

PLATINUM \$10,000+	<i>District 7280</i>	<i>Moses Lake</i>	SILVER \$3,000+	<i>Gahanna</i>	<i>Portland</i>
<i>Aggieland (Byron/College Station)</i>	<i>Doylestown</i>	<i>Mt. Bachelor</i>	<i>Allentown West</i>	<i>Greater Bend</i>	<i>Prescott Frontier</i>
<i>Champaign-Urbana Sunrise</i>	<i>East Hartford</i>	<i>Newport</i>	<i>Alpharetta</i>	<i>Hanalei Bay</i>	<i>Princeton Corridor</i>
<i>District 5100 RYE</i>	<i>Edina Morningside</i>	<i>North Branford</i>	<i>Atwood</i>	<i>Hatboro</i>	<i>Saddlebrooke</i>
<i>District 5580</i>	<i>El Paso</i>	<i>Oro Valley</i>	<i>Auburn Gold Country</i>	<i>Interact Club of Keene</i>	<i>Salina</i>
<i>District 5630</i>	<i>Elgin</i>	<i>Owatonna</i>	<i>Avon/Canton</i>	<i>Johnson City Morning</i>	<i>San Diego Downtown</i>
<i>La Jolla</i>	<i>Elk Grove</i>	<i>Parker</i>	<i>Batavia</i>	<i>Keyser</i>	<i>Breakfast</i>
<i>Northbrook</i>	<i>Fernandina Beach</i>	<i>Plymouth</i>	<i>Bethlehem Morning Star</i>	<i>Klamath County</i>	<i>Sanibel-Captiva</i>
<i>Pisgah Forest</i>	<i>Fort Collins-Breakfast</i>	<i>Point West</i>	<i>Bloomsburg</i>	<i>Lahaina, Maui</i>	<i>Santa Barbara Sunrise</i>
<i>Rockford</i>	<i>Gainesville-Haymarket</i>	<i>Port Townsend</i>	<i>Blue Bell</i>	<i>Lake Arrowhead</i>	<i>Santa Rosa</i>
<i>Seattle</i>	<i>Global Diversity & Environment</i>	<i>Rich-Mar</i>	<i>Boardman</i>	<i>Mountain Sunrise</i>	<i>Sitka</i>
<i>Tooele ValleyWheaton</i>	<i>Golden</i>	<i>Rich-Mar Satellite</i>	<i>Brighton</i>	<i>Lake Ridge</i>	<i>Skokie Valley</i>
	<i>Green Valley</i>	<i>Salinas</i>	<i>Cambria</i>	<i>Lakewood Ranch</i>	<i>Somerset-Pulaski</i>
GOLD \$5,000+	<i>Hendersonville</i>	<i>Sandpoint</i>	<i>Champaign West</i>	<i>Leesburg</i>	<i>Suffern</i>
<i>Alexandria</i>	<i>Hermiston</i>	<i>Seward</i>	<i>Chardon</i>	<i>Lewis River</i>	<i>Tacoma</i>
<i>Allen Sunrise</i>	<i>Highland Park/Highwood</i>	<i>Shelby</i>	<i>Charles Town</i>	<i>Lexington</i>	<i>Telluride</i>
<i>Arden Arcade</i>	<i>Highlands Ranch</i>	<i>Shelton Skookum</i>	<i>China Lake</i>	<i>Longview-Early Edition</i>	<i>Temecula</i>
<i>Ballinger</i>	<i>Ignacio</i>	<i>Sonoma Valley</i>	<i>Chinatown NY</i>	<i>Madera</i>	<i>The Bridgewaters</i>
<i>Boca Raton Downtown</i>	<i>Iowa City AM</i>	<i>Summit County</i>	<i>Chittenango</i>	<i>Marana</i>	<i>Three Creeks Vancouver</i>
<i>Bozeman Sunrise</i>	<i>Jonesboro</i>	<i>Sumner</i>	<i>Citrus Heights</i>	<i>Marion-Morning</i>	<i>Trenton</i>
<i>Bridgeport</i>	<i>Keizer</i>	<i>The Villages</i>	<i>Denver</i>	<i>Metropolitan Lubbock</i>	<i>Trumbull</i>
<i>Chandler Horizon</i>	<i>Kirkland</i>	<i>Valle Verde</i>	<i>District 6440</i>	<i>Milwaukee- North Shore</i>	<i>Tualatin</i>
<i>Claremont Sunrise</i>	<i>Kona</i>	<i>Vancouver</i>	<i>East Saramento</i>	<i>Monmouth</i>	<i>Vinings Cumberland</i>
<i>Clayton</i>	<i>Kutztown</i>	<i>Vancouver Sunrise</i>	<i>Elizabethtown</i>	<i>Mukwonago</i>	<i>West Bay</i>
<i>Colleyville</i>	<i>Leavenworth</i>	<i>Warrenton</i>	<i>Elmira</i>	<i>New Milford Area</i>	<i>Westport</i>
<i>Conroe</i>	<i>Lincoln-Woodstock</i>	<i>Washington DC</i>	<i>Erie</i>	<i>Northville</i>	<i>Willimantic</i>
<i>Coronado</i>	<i>Livonia</i>	<i>Wellsboro</i>	<i>Estero</i>	<i>Novato</i>	<i>Yakima Southwest</i>
<i>Dallas</i>	<i>Los Gatos Morning</i>	<i>Willow Grove</i>	<i>Eugene Delta</i>	<i>Palmyra-Macedon</i>	<i>Yerington</i>
<i>District 5100</i>	<i>Mid-Bay</i>		<i>Fishers</i>	<i>Petaluma</i>	<i>York</i>

VOLUNTEER WITH US



AMBASSADOR

Share ShelterBox through presentations and events.



INFLUENCER

Share ShelterBox news and needs through social media.



ROTARY CLUB CHAMPION

Keep your Rotary Club informed about ShelterBox news and needs.



CHANGEMAKER

Fundraise to support our mission.



SHELTERBOX ADVENTURER

Take on an extraordinary challenge to raise awareness and funding for ShelterBox.



OFFICE ADMINISTRATOR

Help our staff team behind the scenes while learning more about disaster relief.

Every volunteer is instrumental in providing shelter to families after disaster, wherever they are in the world. Whatever skills, knowledge or spare time you have, you can play a vital part in this process.

What role works for you?

Visit ShelterboxUSA.org/volunteer or scan the QR code to learn more about our volunteering options. Be a part of the action.





ShelterBox USA is the recipient of Charity Navigator's "4-Star" rating for financial health, accountability, and transparency and is a GuideStar® Platinum Participant, committed to donor transparency and financial and operational efficiency.



SHELTERBOX USA
101 Innovation Place
Santa Barbara, CA 93108
info@ShelterBoxUSA.org
805.608.2400
www.ShelterBoxUSA.org

DONATE BY MAIL
ShelterBox USA
PO Box 103299
Pasadena, CA 91189-3299

Tent distributions in Morocco following a 6.8 magnitude earthquake in 2023.

ShelterBox is a charity independent of Rotary International and The Rotary Foundation. ShelterBox USA is a 501(c)(3) nonprofit organization in the United States and incorporated in the state of Florida. EIN 20-0471604. Donations to ShelterBox USA are tax-deductible to the extent allowed by U.S. law.